

```

FREQUENCIES VARIABLES=نمک رطوبت پراکسید
/NTILES=4
/STATISTICS=STDDEV VARIANCE RANGE MINIMUM MAXIMUM SEMEAN MEAN MEDIAN MODE SUM SKEWNESS SESKEW
KURTOSIS SEKURT
/GROUPED=نمک رطوبت پراکسید
/HISTOGRAM NORMAL
/ORDER=ANALYSIS.

```

Frequencies

Statistics

		نمک	رطوبت	پراکسید
N	Valid	50	50	50
	Missing	3	3	3
Mean		1.15250	1.6972	1.6800
Std. Error of Mean		.030050	.04055	.17220
Median		1.14667 ^a	1.7050 ^a	1.3000 ^a
Mode		1.000 ^b	1.88	.50
Std. Deviation		.212483	.28676	1.21764
Variance		.045	.082	1.483
Skewness		-.313	.128	.819
Std. Error of Skewness		.337	.337	.337
Kurtosis		-.117	-.387	-.297
Std. Error of Kurtosis		.662	.662	.662
Range		.950	1.25	4.70
Minimum		.550	1.15	.10
Maximum		1.500	2.40	4.80
Sum		57.625	84.86	84.00
Percentiles	25	1.00400 ^c	1.4900 ^c	.6400 ^c
	50	1.14667	1.7050	1.3000
	75	1.31000	1.8900	2.5300

a. Calculated from grouped data.

b. Multiple modes exist. The smallest value is shown

c. Percentiles are calculated from grouped data.

Frequency Table

نمک

	N	%
.550	1	1.9%
.780	1	1.9%
.820	1	1.9%
.860	1	1.9%
.880	1	1.9%
.910	1	1.9%
.930	1	1.9%
.950	1	1.9%
.960	1	1.9%
.970	1	1.9%
1.000	3	5.7%
1.010	2	3.8%
1.030	2	3.8%
1.040	2	3.8%
1.055	1	1.9%
1.100	1	1.9%
1.120	1	1.9%
1.130	2	3.8%
1.140	1	1.9%
1.160	2	3.8%
1.190	1	1.9%
1.200	2	3.8%
1.230	1	1.9%
1.250	1	1.9%
1.270	1	1.9%
1.280	2	3.8%
1.290	1	1.9%
1.300	1	1.9%
1.310	1	1.9%
1.350	2	3.8%
1.370	1	1.9%
1.380	2	3.8%
1.400	1	1.9%
1.420	1	1.9%
1.450	1	1.9%

نمک

	N	%
1.460	1	1.9%
1.500	3	5.7%
Missing System	3	5.7%

رطوبت

	N	%
1.15	1	1.9%
1.22	1	1.9%
1.23	1	1.9%
1.28	1	1.9%
1.30	1	1.9%
1.32	2	3.8%
1.37	1	1.9%
1.39	2	3.8%
1.40	1	1.9%
1.44	1	1.9%
1.49	1	1.9%
1.50	1	1.9%
1.54	1	1.9%
1.55	1	1.9%
1.57	1	1.9%
1.58	1	1.9%
1.60	1	1.9%
1.62	1	1.9%
1.65	2	3.8%
1.67	1	1.9%
1.68	1	1.9%
1.70	1	1.9%
1.71	1	1.9%
1.73	1	1.9%
1.77	1	1.9%
1.78	1	1.9%
1.79	1	1.9%
1.80	1	1.9%

رطوبت

	N	%
1.81	1	1.9%
1.82	1	1.9%
1.84	1	1.9%
1.87	1	1.9%
1.88	3	5.7%
1.90	1	1.9%
1.92	1	1.9%
1.93	1	1.9%
1.95	2	3.8%
1.98	1	1.9%
2.03	1	1.9%
2.06	1	1.9%
2.11	1	1.9%
2.22	1	1.9%
2.24	1	1.9%
2.40	1	1.9%
Missing System	3	5.7%

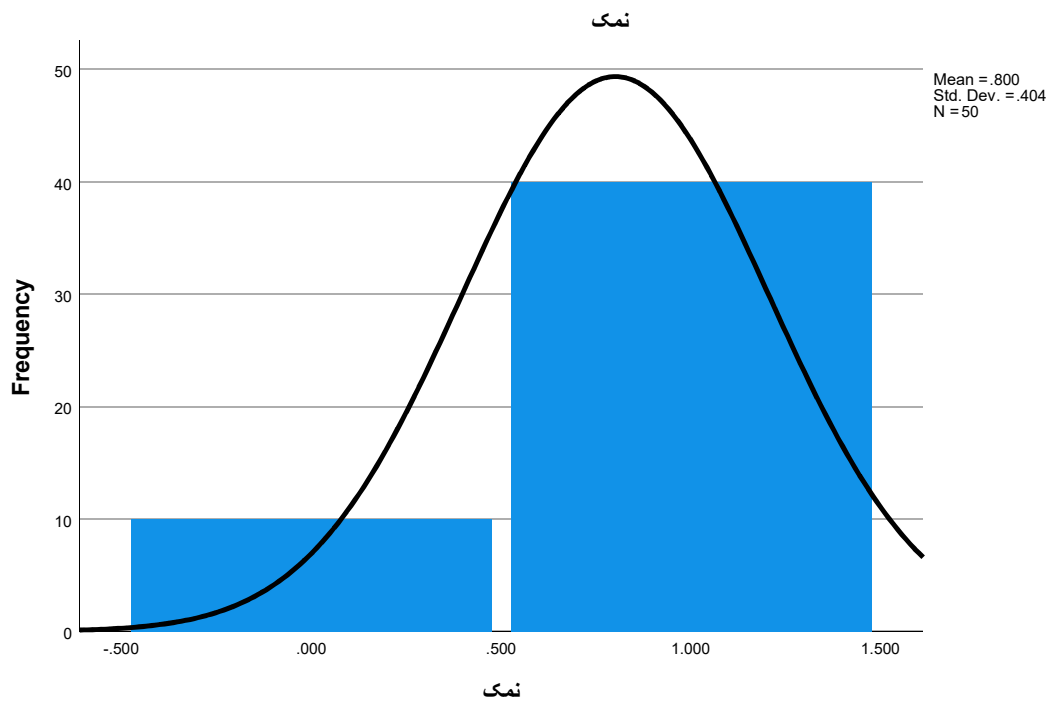
پراکسید

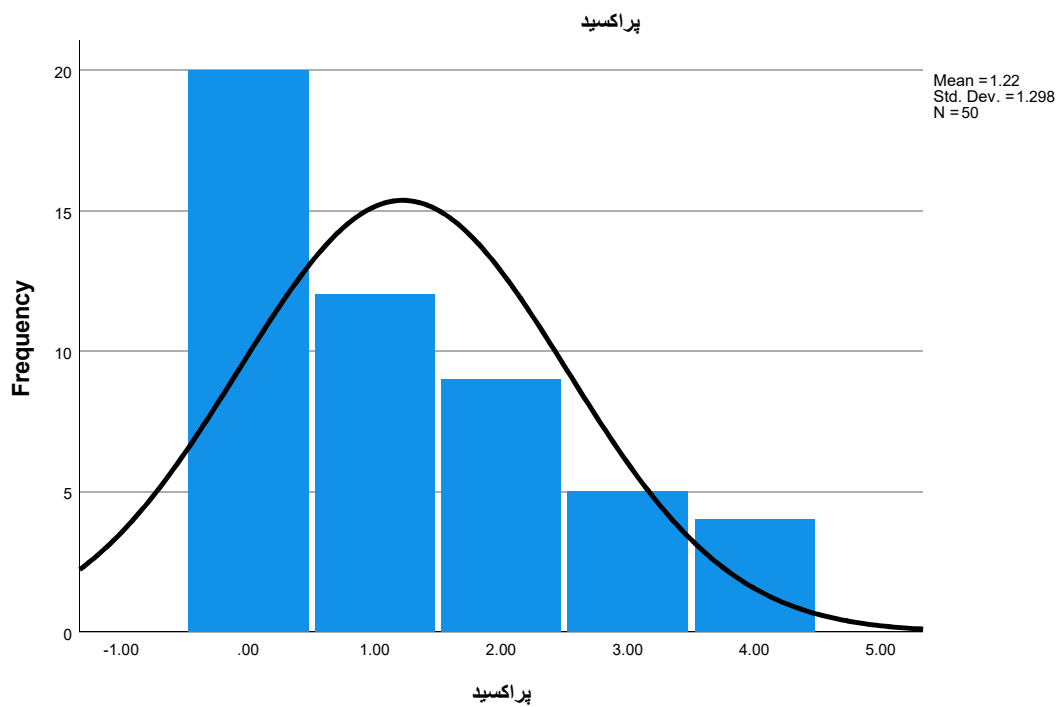
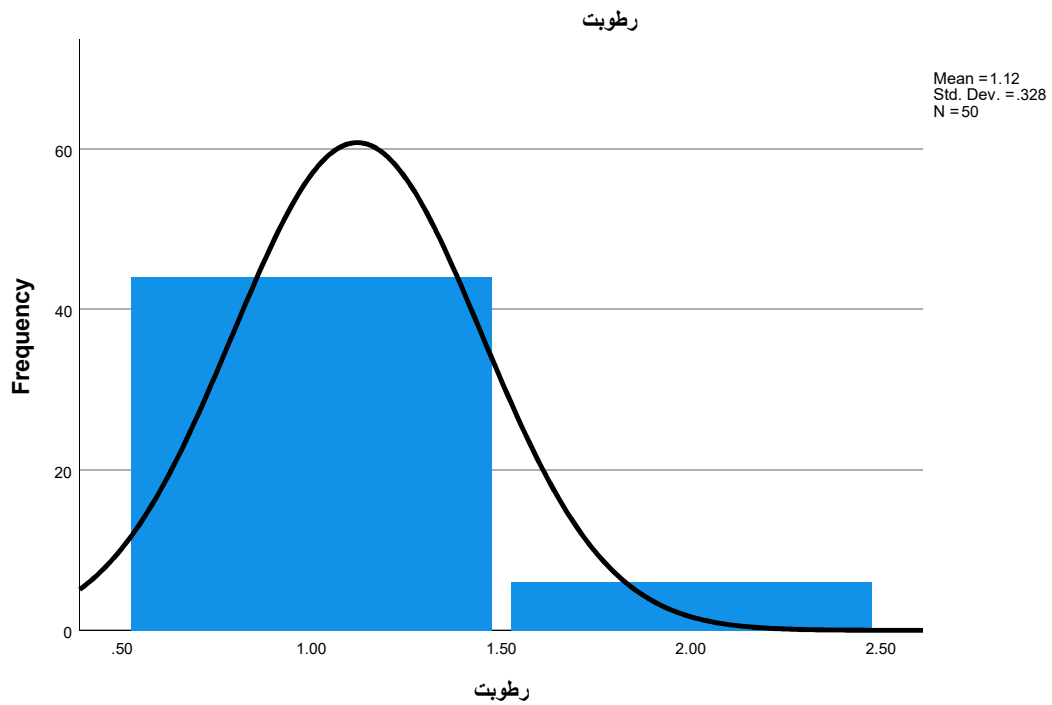
	N	%
.10	1	1.9%
.20	1	1.9%
.32	1	1.9%
.40	1	1.9%
.41	1	1.9%
.50	4	7.5%
.56	2	3.8%
.60	1	1.9%
.66	2	3.8%
.75	1	1.9%
.80	1	1.9%
.90	2	3.8%
.95	1	1.9%
.99	1	1.9%
1.05	1	1.9%
1.10	1	1.9%
1.20	2	3.8%
1.30	2	3.8%
1.50	1	1.9%
1.55	1	1.9%
1.60	1	1.9%
1.66	1	1.9%
1.80	1	1.9%
1.87	1	1.9%
2.00	2	3.8%
2.10	1	1.9%
2.22	1	1.9%
2.26	1	1.9%
2.53	1	1.9%
2.60	1	1.9%
2.90	1	1.9%
2.95	1	1.9%
3.02	1	1.9%
3.20	2	3.8%
3.40	1	1.9%

پراکسید

	N	%
3.73	1	1.9%
4.03	1	1.9%
4.07	1	1.9%
4.10	1	1.9%
4.80	1	1.9%
Missing System	3	5.7%

Histogram





```

OUTPUT MODIFY
/SELECT TABLES
/IF COMMANDS=["Frequencies(LAST)"] SUBTYPES="Frequencies"
/TABLECELLS SELECT=[VALIDPERCENT CUMULATIVEPERCENT] APPLYTO=COLUMN HIDE=YES
/TABLECELLS SELECT=[TOTAL] SELECTCONDITION=PARENT(VALID MISSING) APPLYTO=ROW HIDE=YES

```

```

/TABLECELLS SELECT=[VALID] APPLYTO=ROWHEADER UNGROUP=YES
/TABLECELLS SELECT=[PERCENT] SELECTDIMENSION=COLUMNS FORMAT="PCT" APPLYTO=COLUMN
/TABLECELLS SELECT=[COUNT] APPLYTO=COLUMNHEADER REPLACE="N"
/TABLECELLS SELECT=[PERCENT] APPLYTO=COLUMNHEADER REPLACE="%".
DESCRIPTIVES VARIABLES=نمک رطوبت پراکسید
/STATISTICS=MEAN SUM STDDEV VARIANCE RANGE MIN MAX SEMEAN KURTOSIS SKEWNESS.

```

Descriptives

Descriptive Statistics

	N Statistic	Range Statistic	Minimum Statistic	Maximum Statistic	Sum Statistic	Mean Statistic	Std. Error
نمک	50	.950	.550	1.500	57.625	1.15250	.030050
رطوبت	50	1.25	1.15	2.40	84.86	1.6972	.04055
پراکسید	50	4.70	.10	4.80	84.00	1.6800	.17220
Valid N (listwise)	50						

Descriptive Statistics

	Std. Deviation	Variance	Skewness		Kurtosis	
	Statistic	Statistic	Statistic	Std. Error	Statistic	Std. Error
نمک	.212483	.045	-.313	.337	-.117	.662
رطوبت	.28676	.082	.128	.337	-.387	.662
پراکسید	1.21764	1.483	.819	.337	-.297	.662
Valid N (listwise)						

```

FREQUENCIES VARIABLES=نمک رطوبت پراکسید
/NTILES=4
/STATISTICS=STDDEV VARIANCE RANGE MINIMUM MAXIMUM SEMEAN MEAN MEDIAN MODE SUM SKEWNESS SESKEW
KURTOSIS SEKURT
/GROUPED=نمک رطوبت پراکسید
/BARChart PERCENT
/ORDER=ANALYSIS.

```

Frequencies

Statistics

		نمک	رطوبت	پراکسید
N	Valid	50	50	50
	Missing	3	3	3
Mean		1.15250	1.6972	1.6800
Std. Error of Mean		.030050	.04055	.17220
Median		1.14667 ^a	1.7050 ^a	1.3000 ^a
Mode		1.000 ^b	1.88	.50
Std. Deviation		.212483	.28676	1.21764
Variance		.045	.082	1.483
Skewness		-.313	.128	.819
Std. Error of Skewness		.337	.337	.337
Kurtosis		-.117	-.387	-.297
Std. Error of Kurtosis		.662	.662	.662
Range		.950	1.25	4.70
Minimum		.550	1.15	.10
Maximum		1.500	2.40	4.80
Sum		57.625	84.86	84.00
Percentiles	25	1.00400 ^c	1.4900 ^c	.6400 ^c
	50	1.14667	1.7050	1.3000
	75	1.31000	1.8900	2.5300

a. Calculated from grouped data.

b. Multiple modes exist. The smallest value is shown

c. Percentiles are calculated from grouped data.

Frequency Table

نمک

	N	%
.550	1	1.9%
.780	1	1.9%
.820	1	1.9%
.860	1	1.9%
.880	1	1.9%
.910	1	1.9%
.930	1	1.9%
.950	1	1.9%
.960	1	1.9%
.970	1	1.9%
1.000	3	5.7%
1.010	2	3.8%
1.030	2	3.8%
1.040	2	3.8%
1.055	1	1.9%
1.100	1	1.9%
1.120	1	1.9%
1.130	2	3.8%
1.140	1	1.9%
1.160	2	3.8%
1.190	1	1.9%
1.200	2	3.8%
1.230	1	1.9%
1.250	1	1.9%
1.270	1	1.9%
1.280	2	3.8%
1.290	1	1.9%
1.300	1	1.9%
1.310	1	1.9%
1.350	2	3.8%
1.370	1	1.9%
1.380	2	3.8%
1.400	1	1.9%
1.420	1	1.9%
1.450	1	1.9%

نمک

	N	%
1.460	1	1.9%
1.500	3	5.7%
Missing System	3	5.7%

رطوبت

	N	%
1.15	1	1.9%
1.22	1	1.9%
1.23	1	1.9%
1.28	1	1.9%
1.30	1	1.9%
1.32	2	3.8%
1.37	1	1.9%
1.39	2	3.8%
1.40	1	1.9%
1.44	1	1.9%
1.49	1	1.9%
1.50	1	1.9%
1.54	1	1.9%
1.55	1	1.9%
1.57	1	1.9%
1.58	1	1.9%
1.60	1	1.9%
1.62	1	1.9%
1.65	2	3.8%
1.67	1	1.9%
1.68	1	1.9%
1.70	1	1.9%
1.71	1	1.9%
1.73	1	1.9%
1.77	1	1.9%
1.78	1	1.9%
1.79	1	1.9%
1.80	1	1.9%

رطوبت

	N	%
1.81	1	1.9%
1.82	1	1.9%
1.84	1	1.9%
1.87	1	1.9%
1.88	3	5.7%
1.90	1	1.9%
1.92	1	1.9%
1.93	1	1.9%
1.95	2	3.8%
1.98	1	1.9%
2.03	1	1.9%
2.06	1	1.9%
2.11	1	1.9%
2.22	1	1.9%
2.24	1	1.9%
2.40	1	1.9%
Missing System	3	5.7%

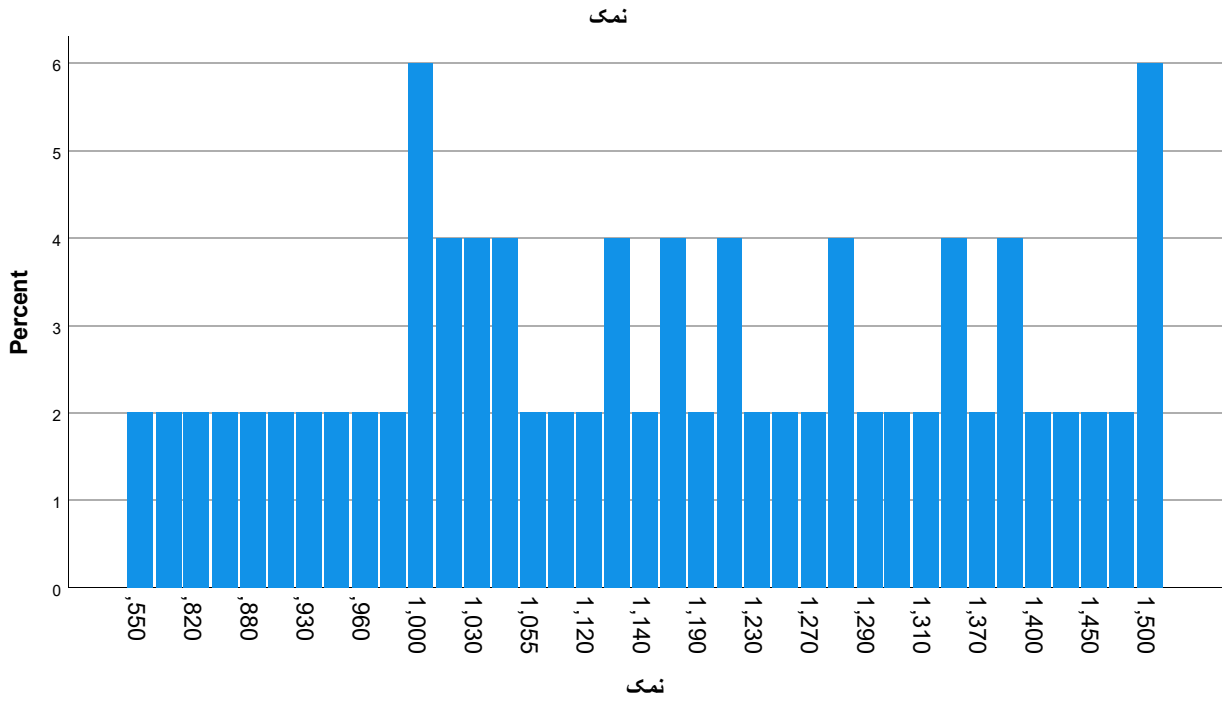
پراکسید

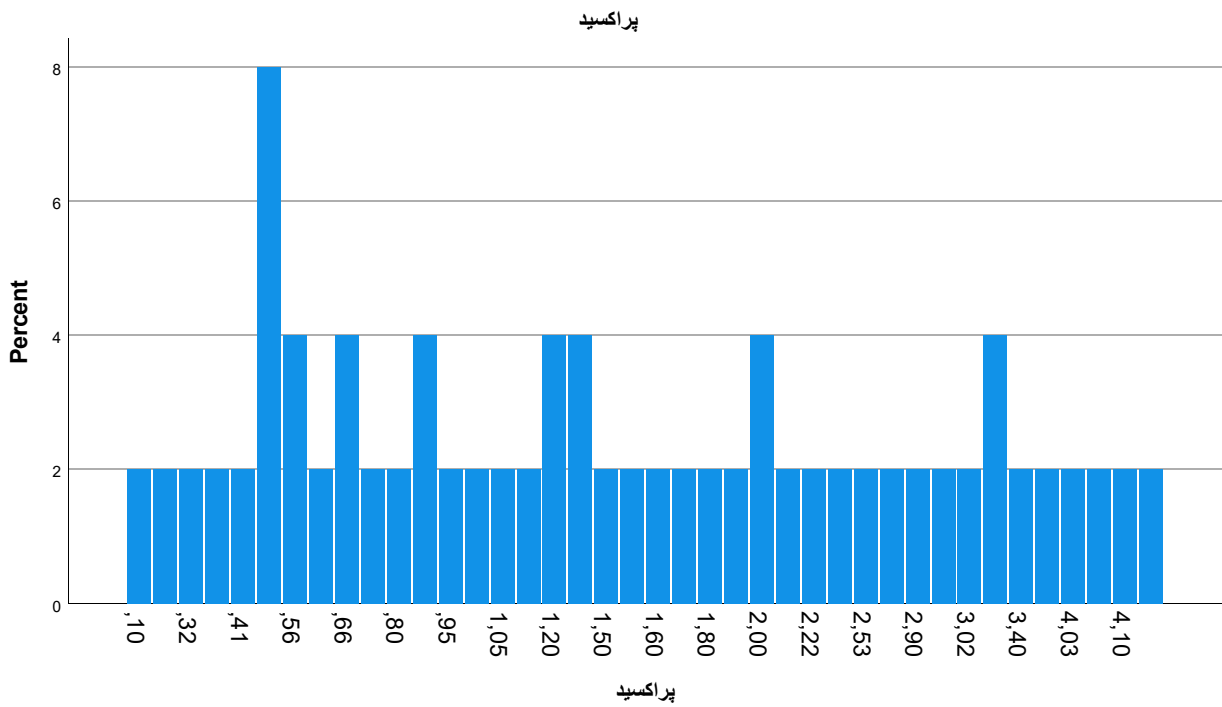
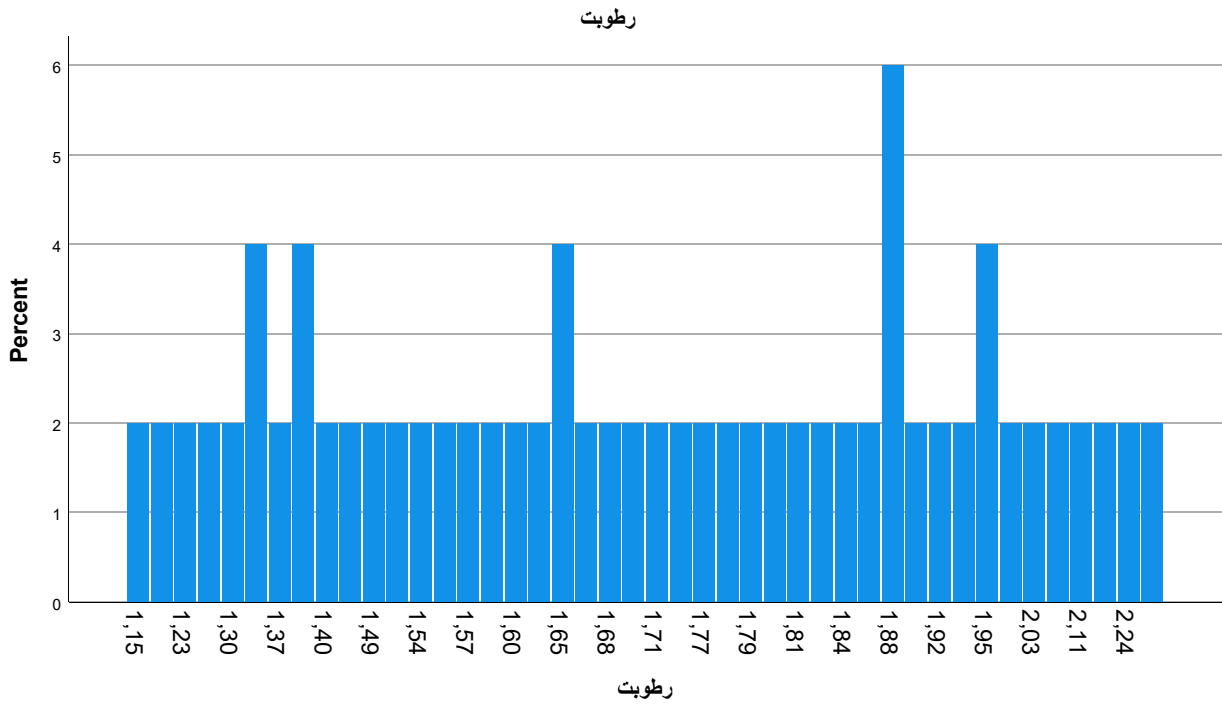
	N	%
.10	1	1.9%
.20	1	1.9%
.32	1	1.9%
.40	1	1.9%
.41	1	1.9%
.50	4	7.5%
.56	2	3.8%
.60	1	1.9%
.66	2	3.8%
.75	1	1.9%
.80	1	1.9%
.90	2	3.8%
.95	1	1.9%
.99	1	1.9%
1.05	1	1.9%
1.10	1	1.9%
1.20	2	3.8%
1.30	2	3.8%
1.50	1	1.9%
1.55	1	1.9%
1.60	1	1.9%
1.66	1	1.9%
1.80	1	1.9%
1.87	1	1.9%
2.00	2	3.8%
2.10	1	1.9%
2.22	1	1.9%
2.26	1	1.9%
2.53	1	1.9%
2.60	1	1.9%
2.90	1	1.9%
2.95	1	1.9%
3.02	1	1.9%
3.20	2	3.8%
3.40	1	1.9%

پراکسید

	N	%
3.73	1	1.9%
4.03	1	1.9%
4.07	1	1.9%
4.10	1	1.9%
4.80	1	1.9%
Missing System	3	5.7%

Bar Chart





```

OUTPUT MODIFY
/SELECT TABLES
/IF COMMANDS=["Frequencies(LAST)"] SUBTYPES="Frequencies"
/TABLECELLS SELECT=[VALIDPERCENT CUMULATIVEPERCENT] APPLYTO=COLUMN HIDE=YES
/TABLECELLS SELECT=[TOTAL] SELECTCONDITION=PARENT(VALID MISSING) APPLYTO=ROW HIDE=YES

```

```

/TABLECELLS SELECT=[VALID] APPLYTO=ROWHEADER UNGROUP=YES
/TABLECELLS SELECT=[PERCENT] SELECTDIMENSION=COLUMNS FORMAT="PCT" APPLYTO=COLUMN
/TABLECELLS SELECT=[COUNT] APPLYTO=COLUMNHEADER REPLACE="N"
/TABLECELLS SELECT=[PERCENT] APPLYTO=COLUMNHEADER REPLACE="%".
FREQUENCIES VARIABLES=نمک رطوبت پراکسید
/NTILES=4
/STATISTICS=STDDEV VARIANCE RANGE MINIMUM MAXIMUM SEMEAN MEAN MEDIAN MODE SUM SKEWNESS SESKEW
KURTOSIS SEKURT
/GROUPED=نمک رطوبت پراکسید
/PIECHART PERCENT
/ORDER=ANALYSIS.

```

Frequencies

Statistics

		نمک	رطوبت	پراکسید
N	Valid	50	50	50
	Missing	3	3	3
Mean		1.15250	1.6972	1.6800
Std. Error of Mean		.030050	.04055	.17220
Median		1.14667 ^a	1.7050 ^a	1.3000 ^a
Mode		1.000 ^b	1.88	.50
Std. Deviation		.212483	.28676	1.21764
Variance		.045	.082	1.483
Skewness		-.313	.128	.819
Std. Error of Skewness		.337	.337	.337
Kurtosis		-.117	-.387	-.297
Std. Error of Kurtosis		.662	.662	.662
Range		.950	1.25	4.70
Minimum		.550	1.15	.10
Maximum		1.500	2.40	4.80
Sum		57.625	84.86	84.00
Percentiles	25	1.00400 ^c	1.4900 ^c	.6400 ^c
	50	1.14667	1.7050	1.3000
	75	1.31000	1.8900	2.5300

a. Calculated from grouped data.

b. Multiple modes exist. The smallest value is shown

c. Percentiles are calculated from grouped data.

Frequency Table

نمک

	N	%
.550	1	1.9%
.780	1	1.9%
.820	1	1.9%
.860	1	1.9%
.880	1	1.9%
.910	1	1.9%
.930	1	1.9%
.950	1	1.9%
.960	1	1.9%
.970	1	1.9%
1.000	3	5.7%
1.010	2	3.8%
1.030	2	3.8%
1.040	2	3.8%
1.055	1	1.9%
1.100	1	1.9%
1.120	1	1.9%
1.130	2	3.8%
1.140	1	1.9%
1.160	2	3.8%
1.190	1	1.9%
1.200	2	3.8%
1.230	1	1.9%
1.250	1	1.9%
1.270	1	1.9%
1.280	2	3.8%
1.290	1	1.9%
1.300	1	1.9%
1.310	1	1.9%
1.350	2	3.8%
1.370	1	1.9%
1.380	2	3.8%
1.400	1	1.9%
1.420	1	1.9%
1.450	1	1.9%

نمک

	N	%
1.460	1	1.9%
1.500	3	5.7%
Missing System	3	5.7%

رطوبت

	N	%
1.15	1	1.9%
1.22	1	1.9%
1.23	1	1.9%
1.28	1	1.9%
1.30	1	1.9%
1.32	2	3.8%
1.37	1	1.9%
1.39	2	3.8%
1.40	1	1.9%
1.44	1	1.9%
1.49	1	1.9%
1.50	1	1.9%
1.54	1	1.9%
1.55	1	1.9%
1.57	1	1.9%
1.58	1	1.9%
1.60	1	1.9%
1.62	1	1.9%
1.65	2	3.8%
1.67	1	1.9%
1.68	1	1.9%
1.70	1	1.9%
1.71	1	1.9%
1.73	1	1.9%
1.77	1	1.9%
1.78	1	1.9%
1.79	1	1.9%
1.80	1	1.9%

رطوبت

	N	%
1.81	1	1.9%
1.82	1	1.9%
1.84	1	1.9%
1.87	1	1.9%
1.88	3	5.7%
1.90	1	1.9%
1.92	1	1.9%
1.93	1	1.9%
1.95	2	3.8%
1.98	1	1.9%
2.03	1	1.9%
2.06	1	1.9%
2.11	1	1.9%
2.22	1	1.9%
2.24	1	1.9%
2.40	1	1.9%
Missing System	3	5.7%

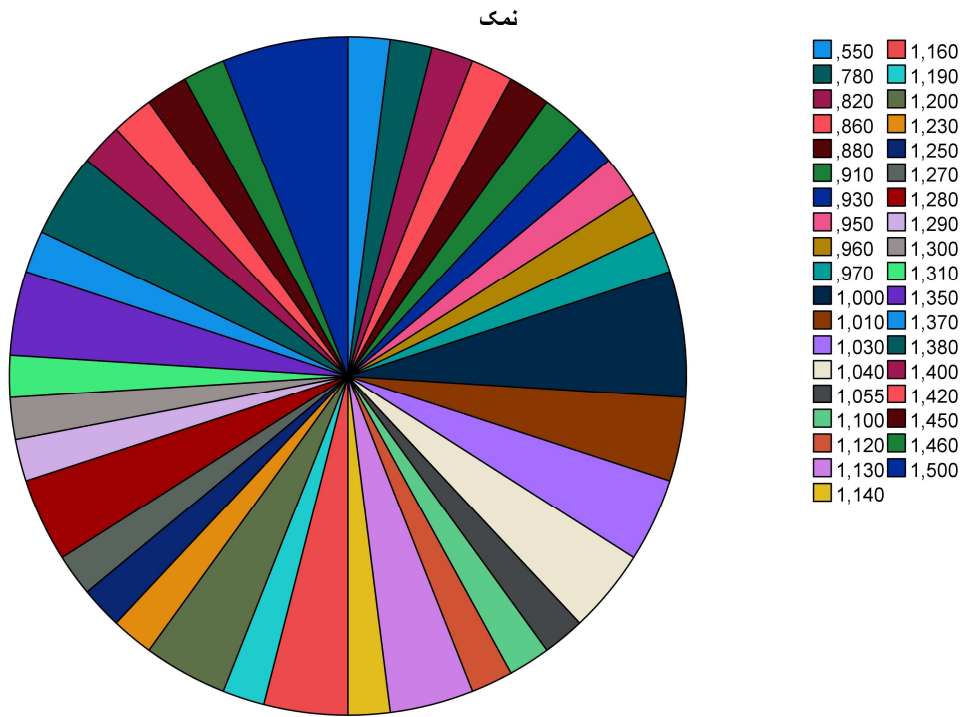
پراکسید

	N	%
.10	1	1.9%
.20	1	1.9%
.32	1	1.9%
.40	1	1.9%
.41	1	1.9%
.50	4	7.5%
.56	2	3.8%
.60	1	1.9%
.66	2	3.8%
.75	1	1.9%
.80	1	1.9%
.90	2	3.8%
.95	1	1.9%
.99	1	1.9%
1.05	1	1.9%
1.10	1	1.9%
1.20	2	3.8%
1.30	2	3.8%
1.50	1	1.9%
1.55	1	1.9%
1.60	1	1.9%
1.66	1	1.9%
1.80	1	1.9%
1.87	1	1.9%
2.00	2	3.8%
2.10	1	1.9%
2.22	1	1.9%
2.26	1	1.9%
2.53	1	1.9%
2.60	1	1.9%
2.90	1	1.9%
2.95	1	1.9%
3.02	1	1.9%
3.20	2	3.8%
3.40	1	1.9%

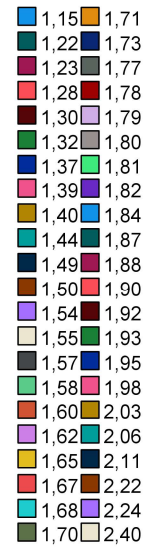
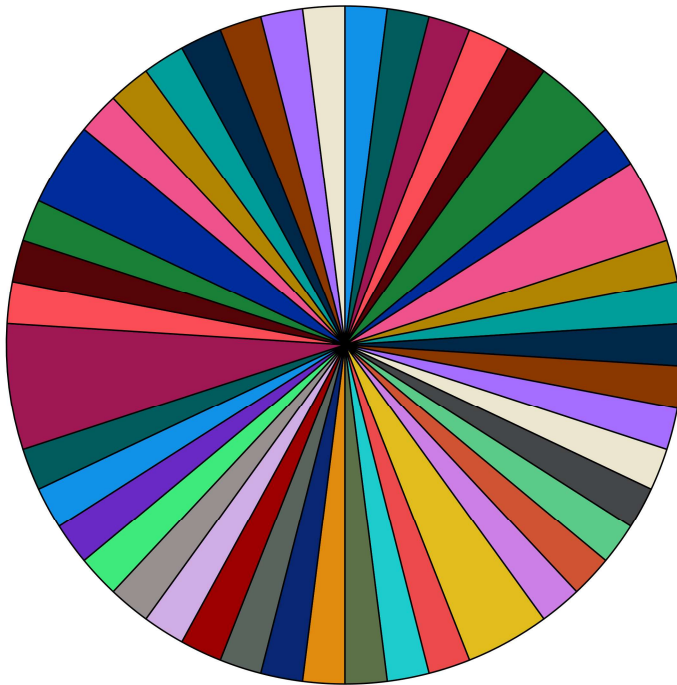
پراکسید

	N	%
3.73	1	1.9%
4.03	1	1.9%
4.07	1	1.9%
4.10	1	1.9%
4.80	1	1.9%
Missing System	3	5.7%

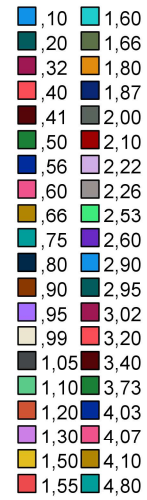
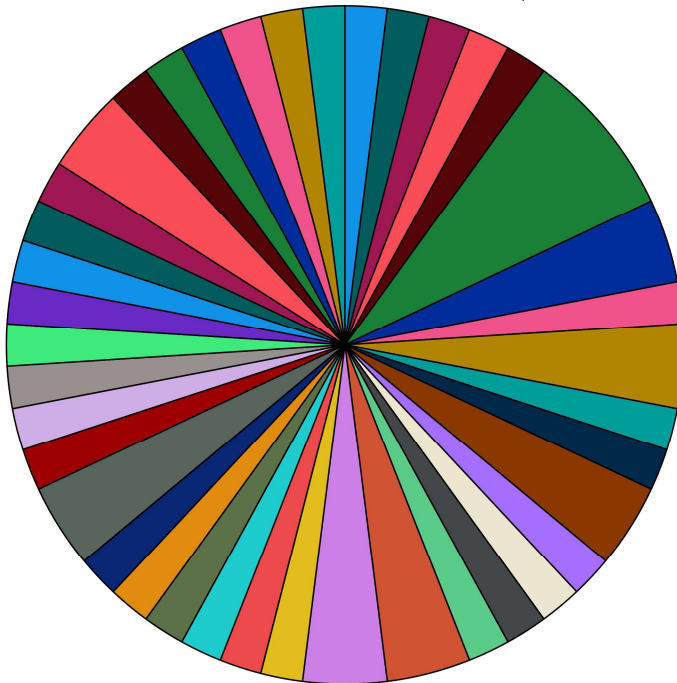
Pie Chart



رطوبت



پراکسید



```

OUTPUT MODIFY
/SELECT TABLES
/IF COMMANDS=["Frequencies(LAST)"] SUBTYPES="Frequencies"
/TABLECELLS SELECT=[VALIDPERCENT CUMULATIVEPERCENT] APPLYTO=COLUMN HIDE=YES
/TABLECELLS SELECT=[TOTAL] SELECTCONDITION=PARENT(VALID MISSING) APPLYTO=ROW HIDE=YES
    
```

```

/TABLECELLS SELECT=[VALID] APPLYTO=ROWHEADER UNGROUP=YES
/TABLECELLS SELECT=[PERCENT] SELECTDIMENSION=COLUMNS FORMAT="PCT" APPLYTO=COLUMN
/TABLECELLS SELECT=[COUNT] APPLYTO=COLUMNHEADER REPLACE="N"
/TABLECELLS SELECT=[PERCENT] APPLYTO=COLUMNHEADER REPLACE="%".
FREQUENCIES VARIABLES=نمک رطوبت پراکسید
/STATISTICS=SKEWNESS SESKEW KURTOSIS SEKURT
/HISTOGRAM NORMAL
/ORDER=ANALYSIS.

```

Frequencies

Statistics

		نمک	رطوبت	پراکسید
N	Valid	50	50	50
	Missing	3	3	3
Skewness		-.313	.128	.819
Std. Error of Skewness		.337	.337	.337
Kurtosis		-.117	-.387	-.297
Std. Error of Kurtosis		.662	.662	.662

Frequency Table

نمک

	N	%
.550	1	1.9%
.780	1	1.9%
.820	1	1.9%
.860	1	1.9%
.880	1	1.9%
.910	1	1.9%
.930	1	1.9%
.950	1	1.9%
.960	1	1.9%
.970	1	1.9%
1.000	3	5.7%
1.010	2	3.8%
1.030	2	3.8%
1.040	2	3.8%
1.055	1	1.9%
1.100	1	1.9%
1.120	1	1.9%

نمک

	N	%
1.130	2	3.8%
1.140	1	1.9%
1.160	2	3.8%
1.190	1	1.9%
1.200	2	3.8%
1.230	1	1.9%
1.250	1	1.9%
1.270	1	1.9%
1.280	2	3.8%
1.290	1	1.9%
1.300	1	1.9%
1.310	1	1.9%
1.350	2	3.8%
1.370	1	1.9%
1.380	2	3.8%
1.400	1	1.9%
1.420	1	1.9%
1.450	1	1.9%
1.460	1	1.9%
1.500	3	5.7%
Missing System	3	5.7%

رطوبت

	N	%
1.15	1	1.9%
1.22	1	1.9%
1.23	1	1.9%
1.28	1	1.9%
1.30	1	1.9%
1.32	2	3.8%
1.37	1	1.9%
1.39	2	3.8%
1.40	1	1.9%
1.44	1	1.9%
1.49	1	1.9%
1.50	1	1.9%
1.54	1	1.9%
1.55	1	1.9%
1.57	1	1.9%
1.58	1	1.9%
1.60	1	1.9%
1.62	1	1.9%
1.65	2	3.8%
1.67	1	1.9%
1.68	1	1.9%
1.70	1	1.9%
1.71	1	1.9%
1.73	1	1.9%
1.77	1	1.9%
1.78	1	1.9%
1.79	1	1.9%
1.80	1	1.9%
1.81	1	1.9%
1.82	1	1.9%
1.84	1	1.9%
1.87	1	1.9%
1.88	3	5.7%
1.90	1	1.9%
1.92	1	1.9%

رطوبت

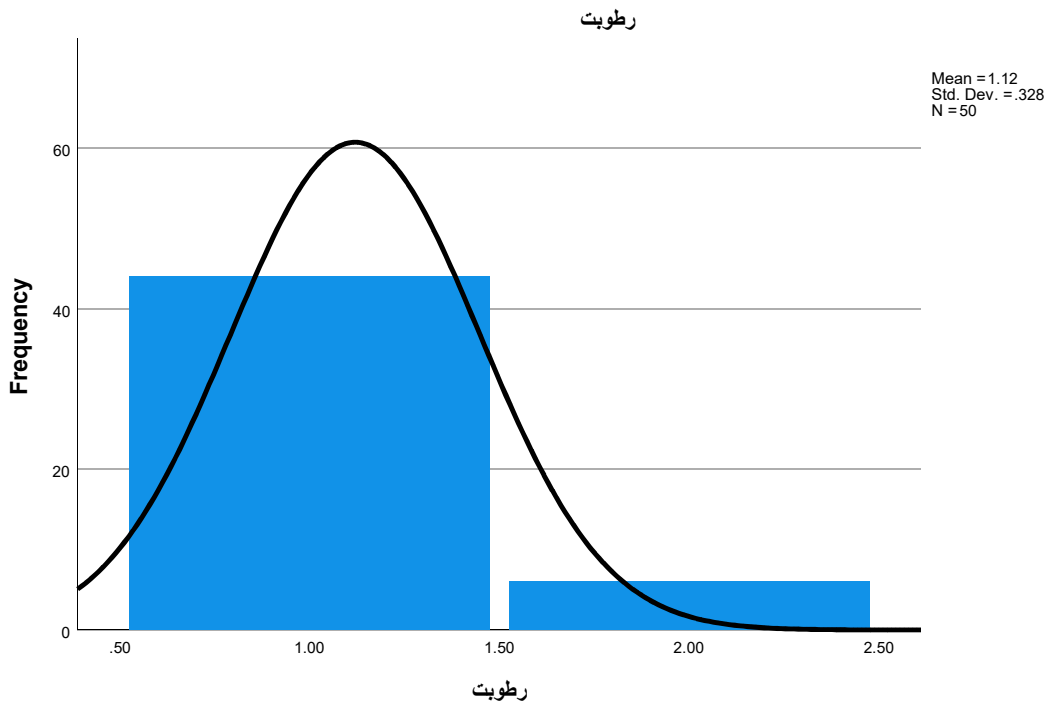
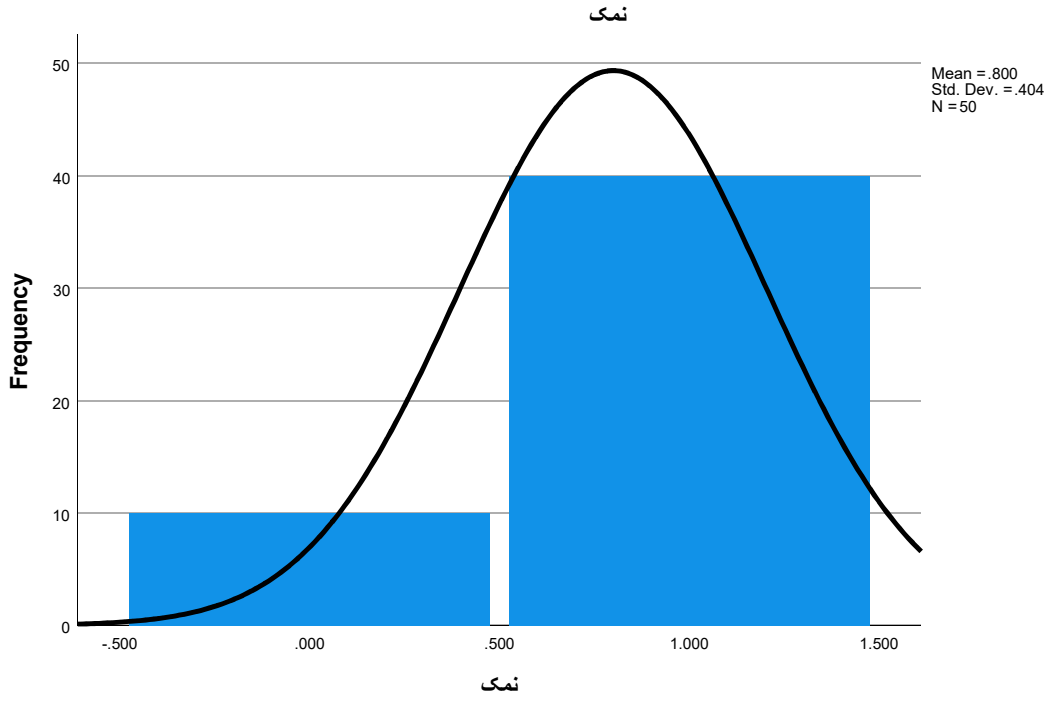
	N	%
1.93	1	1.9%
1.95	2	3.8%
1.98	1	1.9%
2.03	1	1.9%
2.06	1	1.9%
2.11	1	1.9%
2.22	1	1.9%
2.24	1	1.9%
2.40	1	1.9%
Missing System	3	5.7%

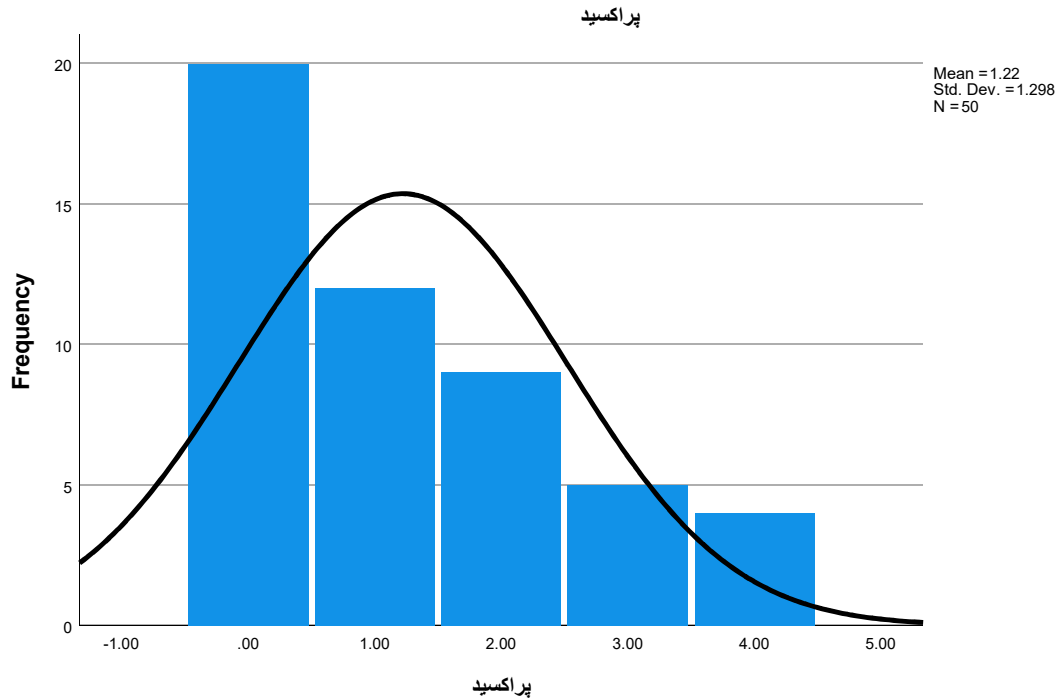
پراکسید

	N	%
.10	1	1.9%
.20	1	1.9%
.32	1	1.9%
.40	1	1.9%
.41	1	1.9%
.50	4	7.5%
.56	2	3.8%
.60	1	1.9%
.66	2	3.8%
.75	1	1.9%
.80	1	1.9%
.90	2	3.8%
.95	1	1.9%
.99	1	1.9%
1.05	1	1.9%
1.10	1	1.9%
1.20	2	3.8%
1.30	2	3.8%
1.50	1	1.9%
1.55	1	1.9%
1.60	1	1.9%

پراکسید

	N	%
1.66	1	1.9%
1.80	1	1.9%
1.87	1	1.9%
2.00	2	3.8%
2.10	1	1.9%
2.22	1	1.9%
2.26	1	1.9%
2.53	1	1.9%
2.60	1	1.9%
2.90	1	1.9%
2.95	1	1.9%
3.02	1	1.9%
3.20	2	3.8%
3.40	1	1.9%
3.73	1	1.9%
4.03	1	1.9%
4.07	1	1.9%
4.10	1	1.9%
4.80	1	1.9%
Missing System	3	5.7%





```

OUTPUT MODIFY
  /SELECT TABLES
  /IF COMMANDS=["Frequencies(LAST)"] SUBTYPES="Frequencies"
  /TABLECELLS SELECT=[VALIDPERCENT CUMULATIVEPERCENT] APPLYTO=COLUMN HIDE=YES
  /TABLECELLS SELECT=[TOTAL] SELECTCONDITION=PARENT(VALID MISSING) APPLYTO=ROW HIDE=YES
  /TABLECELLS SELECT=[VALID] APPLYTO=ROWHEADER UNGROUP=YES
  /TABLECELLS SELECT=[PERCENT] SELECTDIMENSION=COLUMNS FORMAT="PCT" APPLYTO=COLUMN
  /TABLECELLS SELECT=[COUNT] APPLYTO=COLUMNHEADER REPLACE="N"
  /TABLECELLS SELECT=[PERCENT] APPLYTO=COLUMNHEADER REPLACE="%".
EXAMINE VARIABLES=نمک رطوبت پراکسید
  /PLOT BOXPLOT STEMLEAF HISTOGRAM NPLOT
  /COMPARE GROUPS
  /MESTIMATORS HUBER(1.339) ANDREW(1.34) HAMPEL(1.7,3.4,8.5) TUKEY(4.685)
  /PERCENTILES(5,10,25,50,75,90,95) HAVERAGE
  /STATISTICS DESCRIPTIVES EXTREME
  /CINTERVAL 95
  /MISSING LISTWISE
  /NOTOTAL.

```

Explore

Case Processing Summary

	Valid		Cases Missing		Total	
	N	Percent	N	Percent	N	Percent
نمک	50	94.3%	3	5.7%	53	100.0%
رطوبت	50	94.3%	3	5.7%	53	100.0%
پراکسید	50	94.3%	3	5.7%	53	100.0%

Descriptives

		Statistic	Std. Error	
نمک	Mean	1.15250	.030050	
	95% Confidence Interval for Mean	Lower Bound	1.09211	
		Upper Bound	1.21289	
	5% Trimmed Mean	1.15856		
	Median	1.15000		
	Variance	.045		
	Std. Deviation	.212483		
	Minimum	.550		
	Maximum	1.500		
	Range	.950		
	Interquartile Range	.320		
	Skewness	-.313	.337	
	Kurtosis	-.117	.662	
	رطوبت	Mean	1.6972	.04055
95% Confidence Interval for Mean		Lower Bound	1.6157	
		Upper Bound	1.7787	
5% Trimmed Mean		1.6917		
Median		1.7050		
Variance		.082		
Std. Deviation		.28676		
Minimum		1.15		
Maximum		2.40		
Range		1.25		
Interquartile Range		.41		
Skewness		.128	.337	
Kurtosis		-.387	.662	
پراکسید		Mean	1.6800	.17220

Descriptives

		Statistic	Std. Error
95% Confidence Interval for Mean	Lower Bound	1.3339	
	Upper Bound	2.0261	
5% Trimmed Mean		1.6134	
Median		1.3000	
Variance		1.483	
Std. Deviation		1.21764	
Minimum		.10	
Maximum		4.80	
Range		4.70	
Interquartile Range		1.90	
Skewness		.819	.337
Kurtosis		-.297	.662

M-Estimators

	Huber's M-Estimator ^a	Tukey's Biweight ^b	Hampel's M-Estimator ^c	Andrews' Waved ^d
نمک	1.15418	1.16095	1.15849	1.16140
رطوبت	1.7009	1.6935	1.6931	1.6935
پراکسید	1.4445	1.3900	1.5083	1.3890

- a. The weighting constant is 1.339.
- b. The weighting constant is 4.685.
- c. The weighting constants are 1.700, 3.400, and 8.500
- d. The weighting constant is $1.340 \cdot \pi$.

Percentiles

		Percentiles					
		5	10	25	50	75	90
Weighted Average (Definition 1)	نمک	.80200	.88300	1.00000	1.15000	1.32000	1.44700
	رطوبت	1.2255	1.3020	1.4775	1.7050	1.8850	2.0570
	پراکسید	.2660	.4190	.6450	1.3000	2.5475	3.6970
Tukey's Hinges	نمک			1.00000	1.15000	1.31000	
	رطوبت			1.4900	1.7050	1.8800	
	پراکسید			.6600	1.3000	2.5300	

Percentiles

		Percentiles
		95
Weighted Average (Definition 1)	نمک	1.50000
	رطوبت	2.2290
	پراکسید	4.0835
Tukey's Hinges	نمک	
	رطوبت	
	پراکسید	

Extreme Values

			Case Number	Value
نمک	Highest	1	1	1.500
		2	36	1.500
		3	38	1.500
		4	34	1.460
		5	29	1.450
	Lowest	1	7	.550
		2	26	.780
		3	33	.820
		4	4	.860
		5	19	.880
رطوبت	Highest	1	36	2.40
		2	37	2.24
		3	20	2.22
		4	14	2.11
		5	30	2.06
	Lowest	1	10	1.15
		2	9	1.22
		3	1	1.23
		4	50	1.28
		5	6	1.30
پراکسید	Highest	1	9	4.80
		2	46	4.10
		3	10	4.07
		4	29	4.03
		5	3	3.73

Extreme Values

		Case Number	Value
Lowest	1	1	.10
	2	2	.20
	3	5	.32
	4	35	.40
	5	8	.41

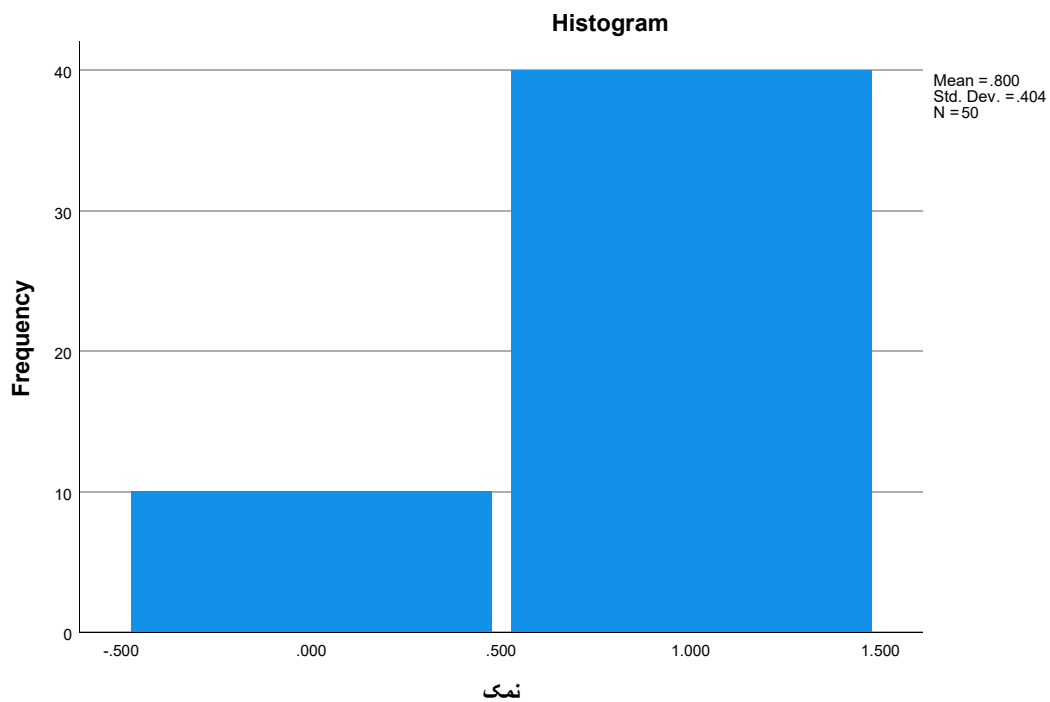
Tests of Normality

	Kolmogorov-Smirnov ^a			Shapiro-Wilk		
	Statistic	df	Sig.	Statistic	df	Sig.
نمک	.082	50	.200*	.974	50	.327
رطوبت	.070	50	.200*	.985	50	.767
پراکسید	.143	50	.013	.911	50	.001

*. This is a lower bound of the true significance.

a. Lilliefors Significance Correction

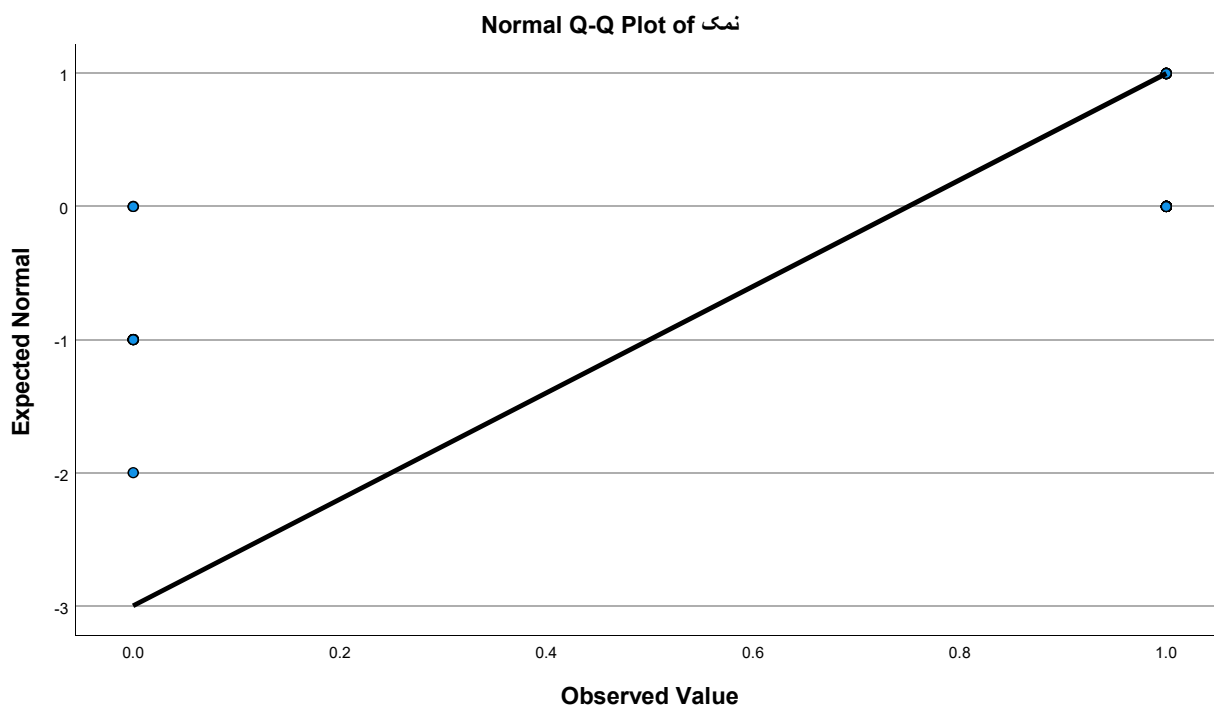
نمک



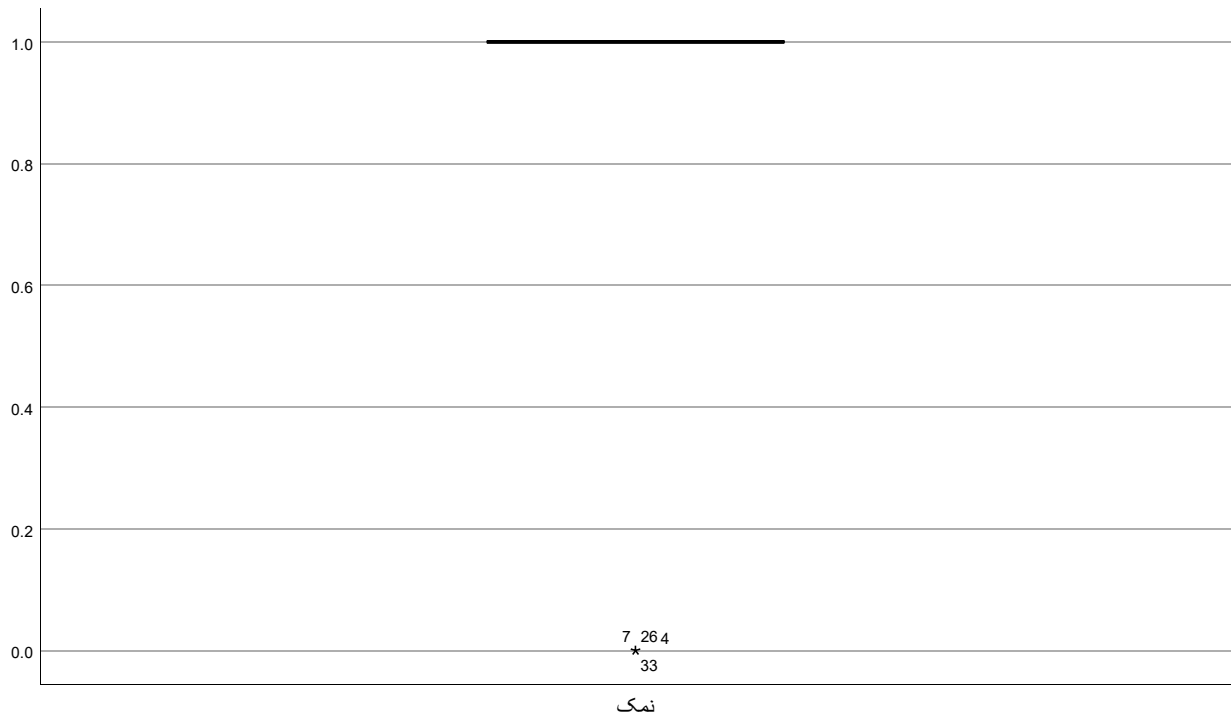
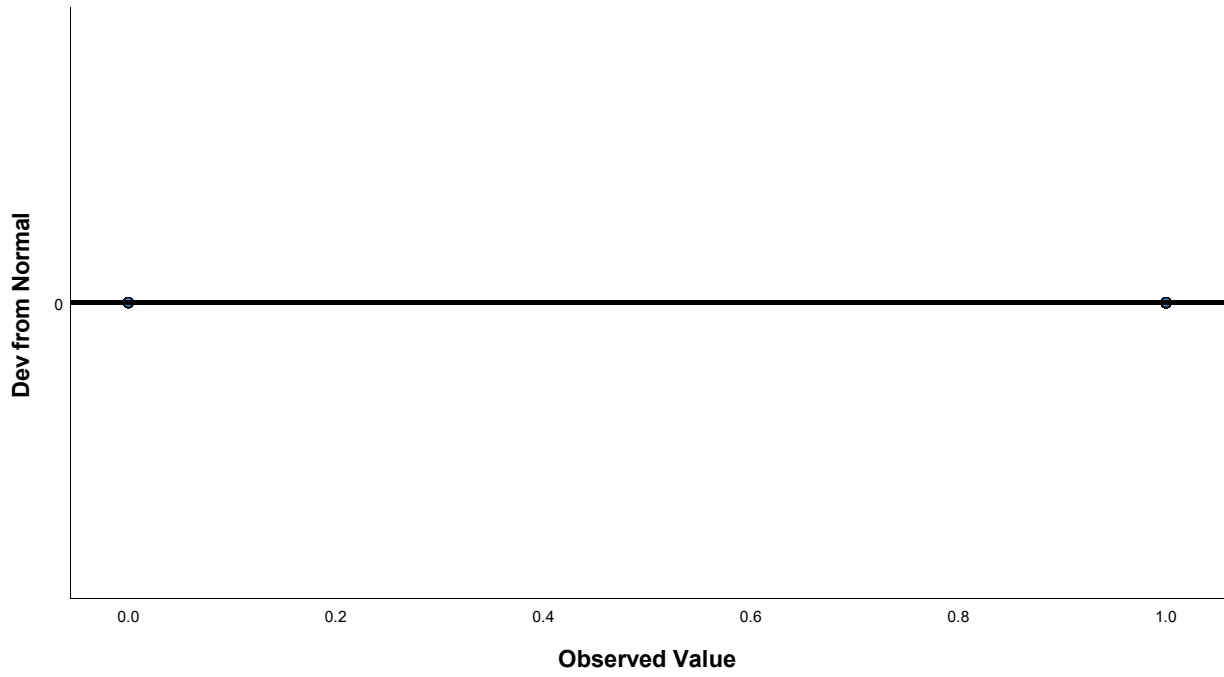
نمک Stem-and-Leaf Plot

Frequency	Stem & Leaf
1,00	5 . 5
,00	6 .
1,00	7 . 8
3,00	8 . 268
5,00	9 . 13567
10,00	10 . 0001133445
8,00	11 . 02334669
8,00	12 . 00357889
7,00	13 . 0155788
4,00	14 . 0256
3,00	15 . 000

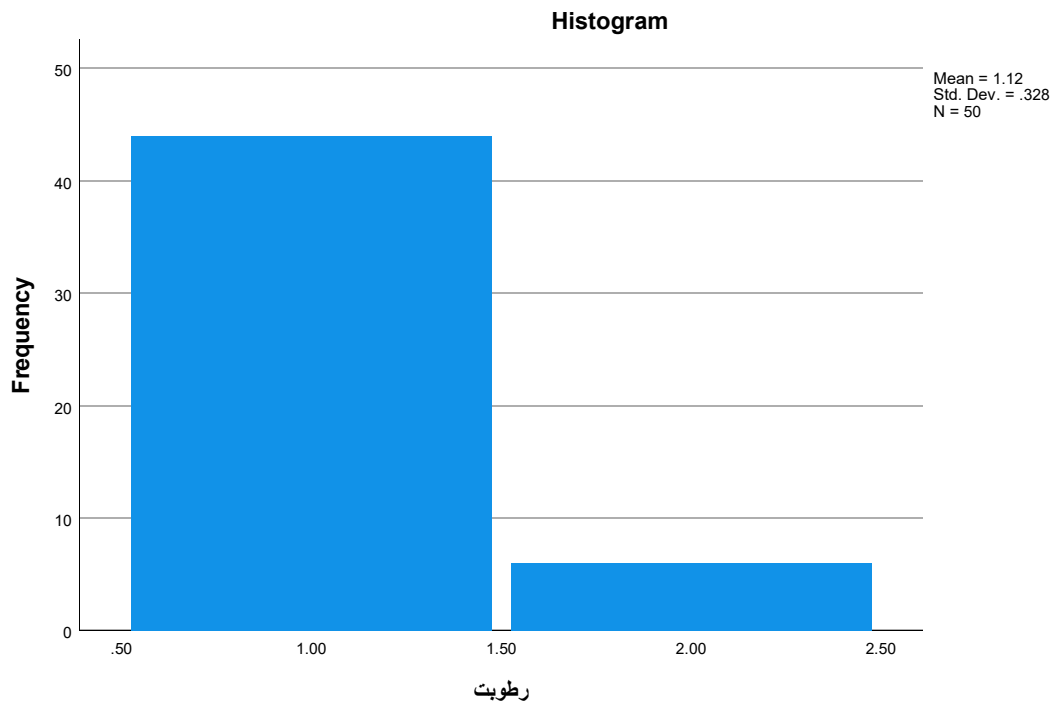
Stem width: ,100
Each leaf: 1 case(s)



Detrended Normal Q-Q Plot of نمک



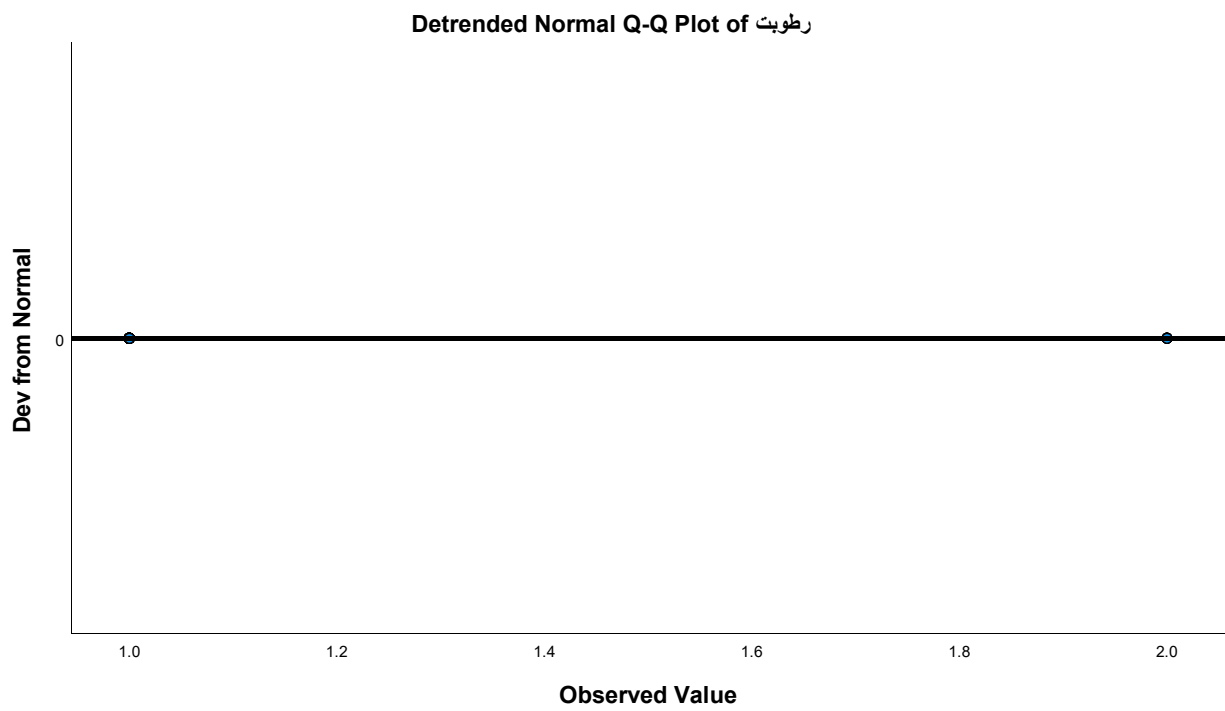
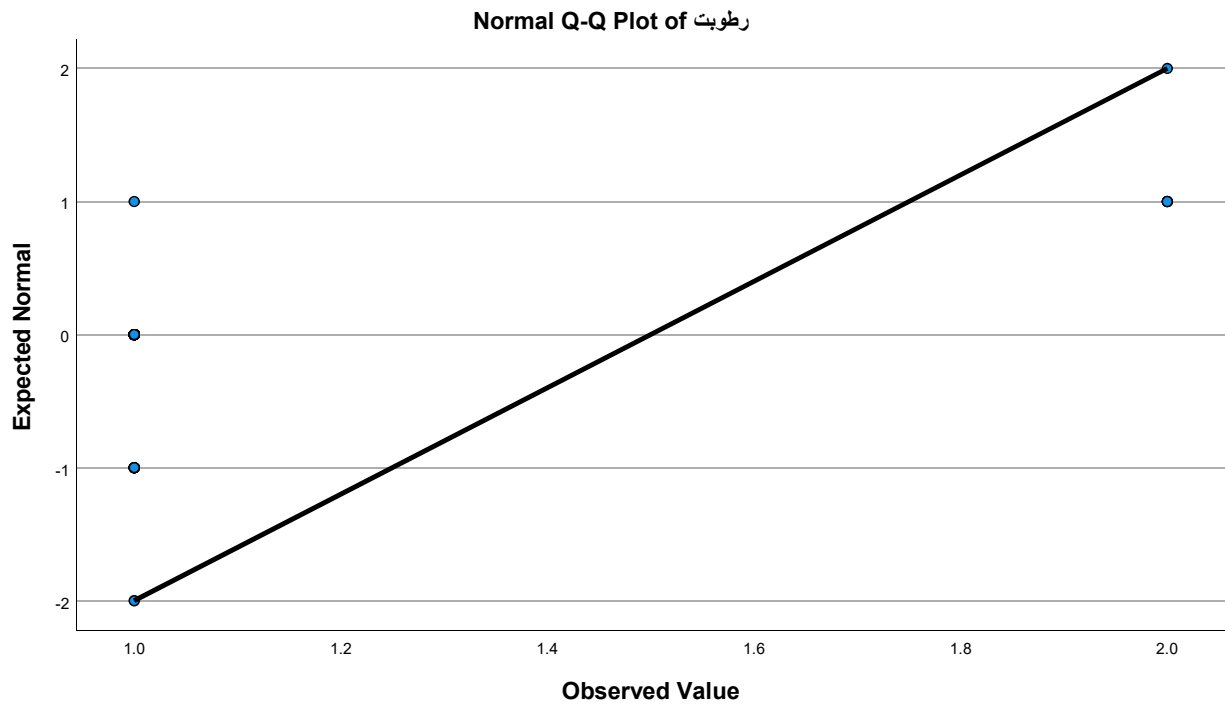
رطوبت

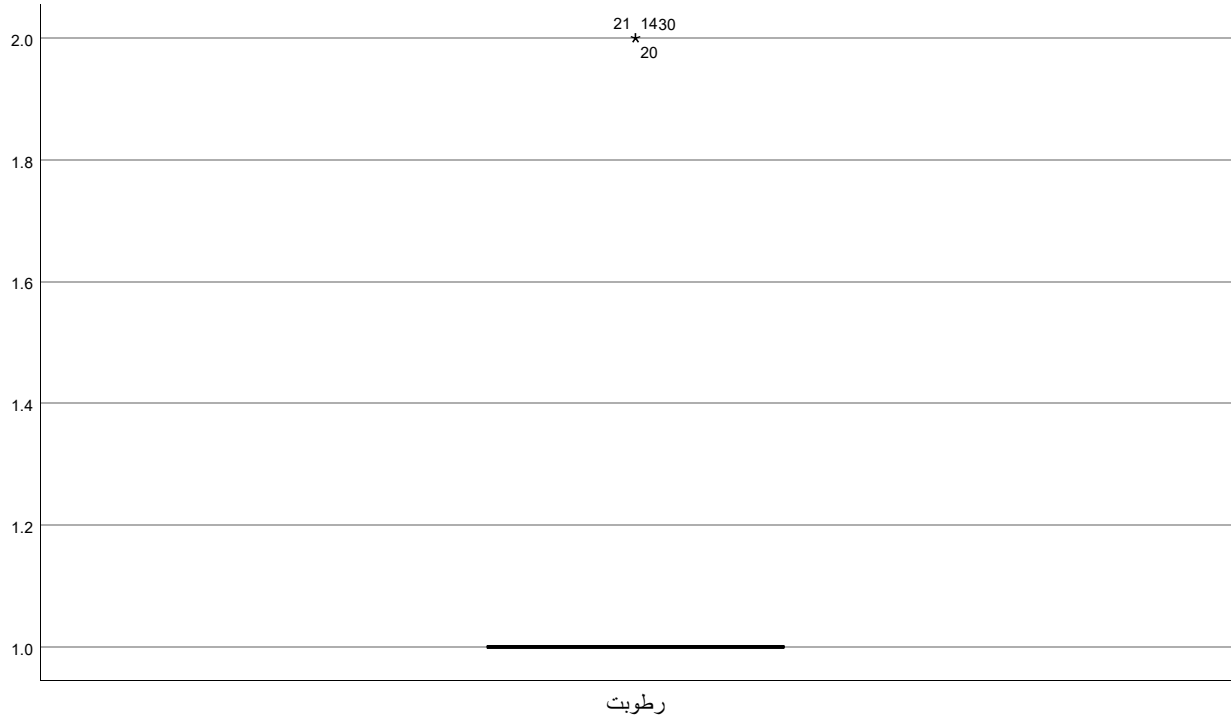


رطوبت Stem-and-Leaf Plot

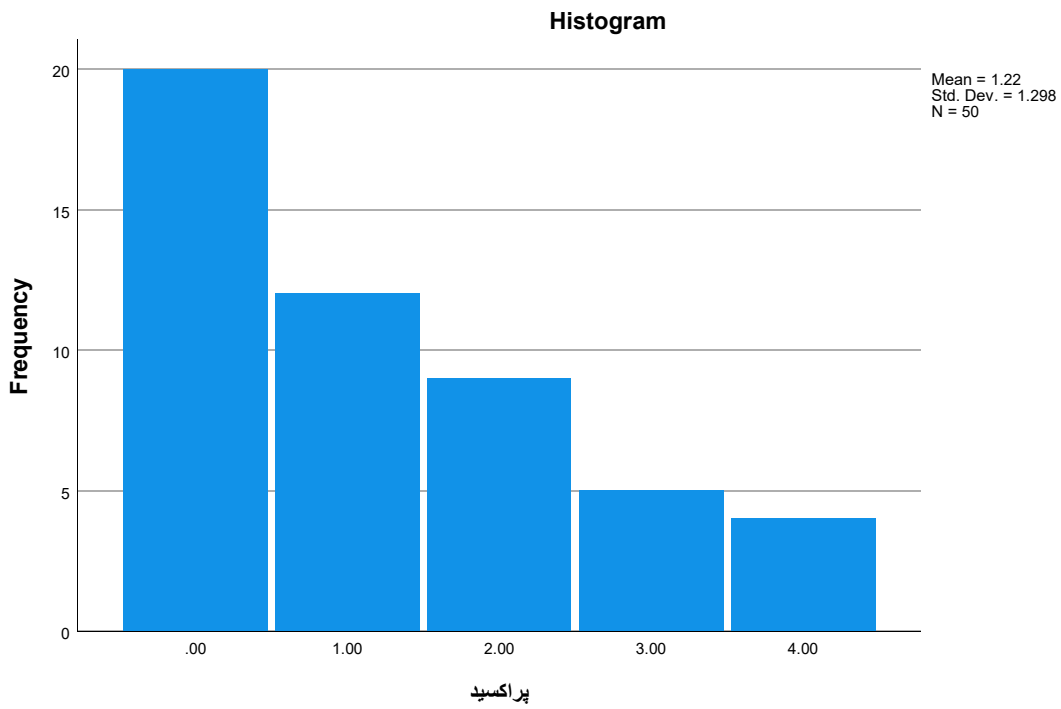
Frequency	Stem & Leaf
1,00	1 . 1
9,00	1 . 222333333
8,00	1 . 4445555
12,00	1 . 66666677777
14,00	1 . 8888888899999
3,00	2 . 001
2,00	2 . 22
1,00	2 . 4

Stem width: 1,00
Each leaf: 1 case(s)





پراکسید

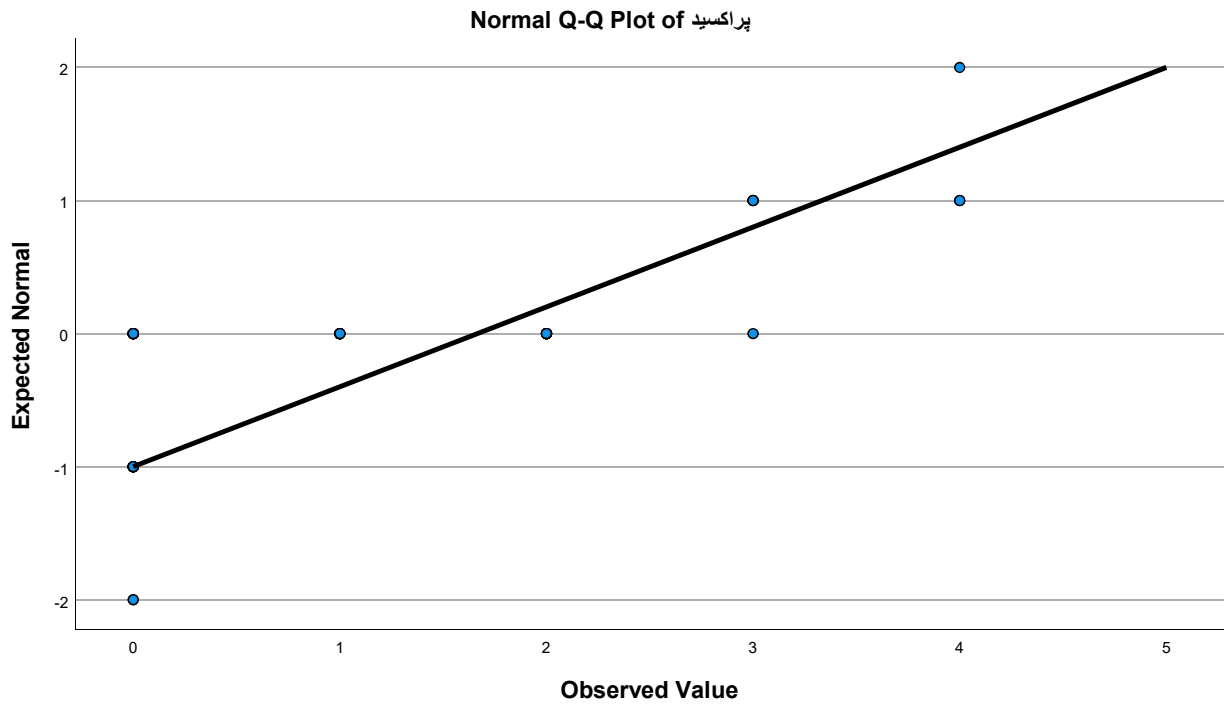


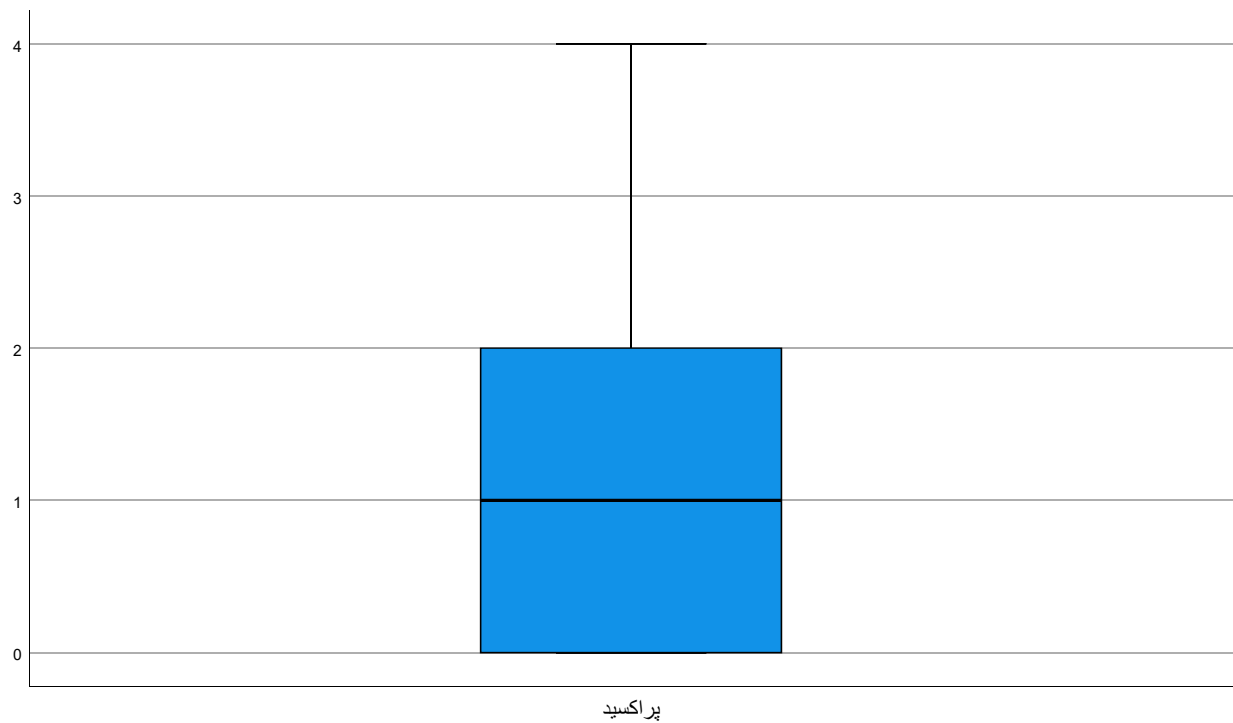
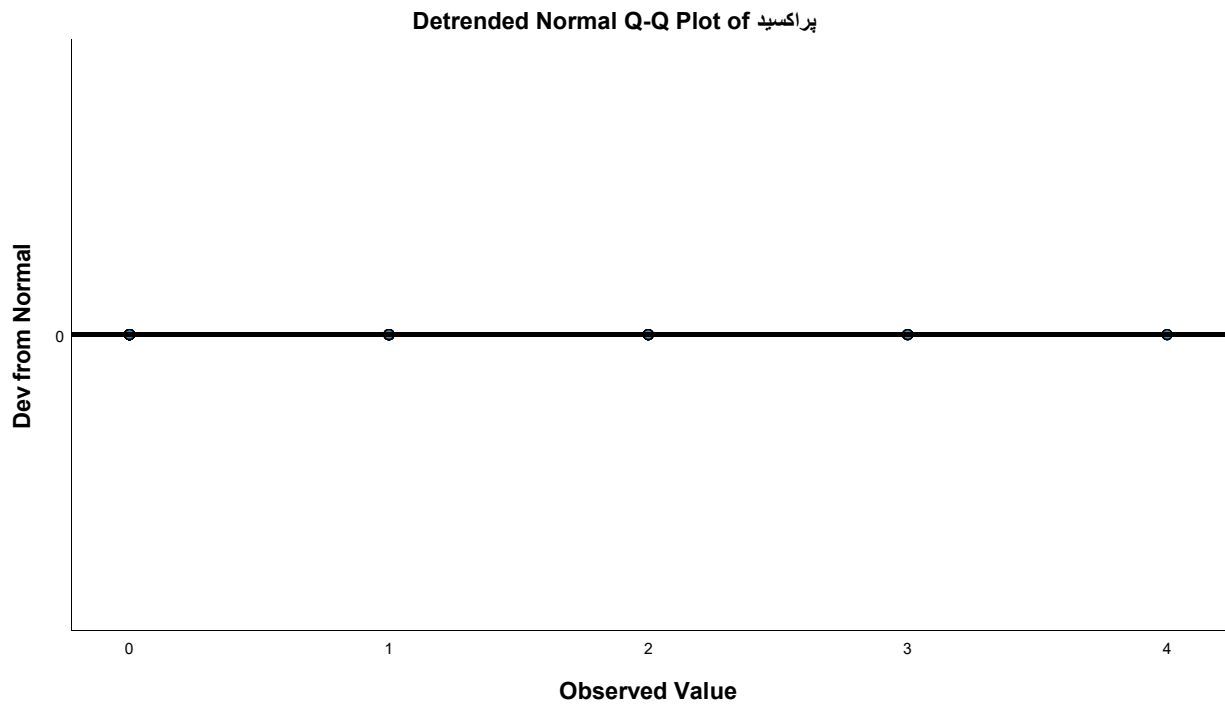
پراکسید Stem-and-Leaf Plot

Frequency Stem & Leaf

5,00	0 .	12344
15,00	0 .	555555666789999
6,00	1 .	012233
6,00	1 .	556688
5,00	2 .	00122
4,00	2 .	5699
4,00	3 .	0224
1,00	3 .	7
3,00	4 .	001
1,00	4 .	8

Stem width: 1,00
Each leaf: 1 case(s)





```

SAVE OUTFILE='D:\Personal Files V\Work Activities\IranTypist\Orders\S_Analysis\N-14021020\123.sav'
/COMPRESSED.
CORRELATIONS
/VARIABLES=نمک رطوبت پراکسید
/PRINT=TWOTAIL NOSIG LOWER

```



```

/STATISTICS DESCRIPTIVES XPROD
/MISSING=PAIRWISE.

```

Correlations

[DataSet1] D:\Personal Files V\Work Activities\IranTypist\Orders\S_Analysis\N-14021020\123.sav

Descriptive Statistics

	Mean	Std. Deviation	N
نمک	1.15250	.212483	50
رطوبت	1.6972	.28676	50
پراکسید	1.6800	1.21764	50

Correlations

		نمک	رطوبت	پراکسید
نمک	Pearson Correlation	--		
	Sum of Squares and Cross-products	2.212		
	Covariance	.045		
	N	50		
رطوبت	Pearson Correlation	.160	--	
	Sig. (2-tailed)	.267		
	Sum of Squares and Cross-products	.478	4.029	
	Covariance	.010	.082	
	N	50	50	
پراکسید	Pearson Correlation	.069	-.054	--
	Sig. (2-tailed)	.632	.707	
	Sum of Squares and Cross-products	.879	-.932	72.650
	Covariance	.018	-.019	1.483
	N	50	50	50

NONPAR CORR

```

/VARIABLES=نمک رطوبت پراکسید
/PRINT=BOTH TWOTAIL NOSIG LOWER
/MISSING=PAIRWISE.

```

Nonparametric Correlations

Correlations

		نمک	رطوبت	پراکسید	
Kendall's tau_b	نمک	Correlation Coefficient	--		
		Sig. (2-tailed)	.		
		N	50		
	رطوبت	Correlation Coefficient	.119	--	
		Sig. (2-tailed)	.228	.	
		N	50	50	
	پراکسید	Correlation Coefficient	.027	.075	--
		Sig. (2-tailed)	.782	.446	.
		N	50	50	50
Spearman's rho	نمک	Correlation Coefficient	--		
		Sig. (2-tailed)	.		
		N	50		
	رطوبت	Correlation Coefficient	.164	--	
		Sig. (2-tailed)	.254	.	
		N	50	50	
	پراکسید	Correlation Coefficient	.050	.086	--
		Sig. (2-tailed)	.732	.552	.
		N	50	50	50