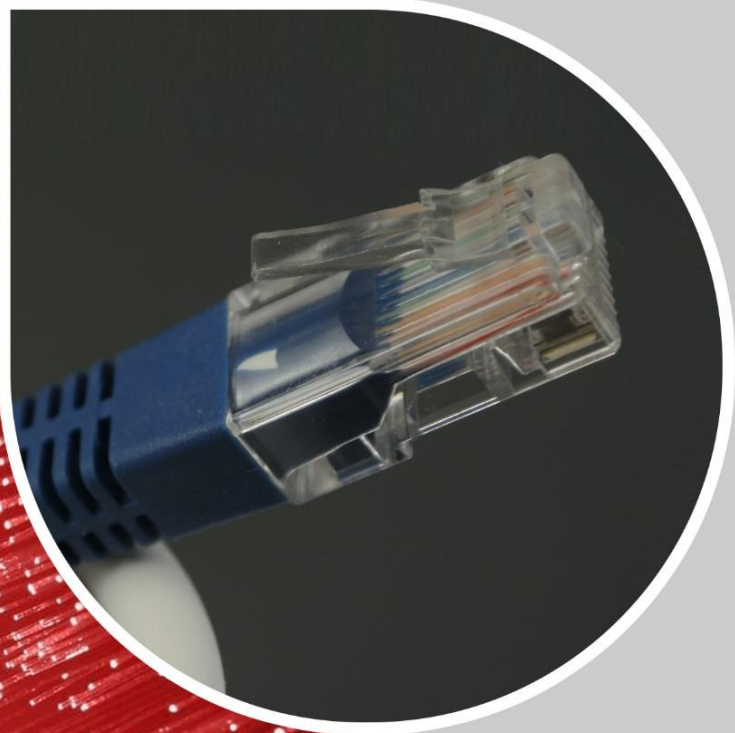




High Quality Network Cable

PATCH CORD

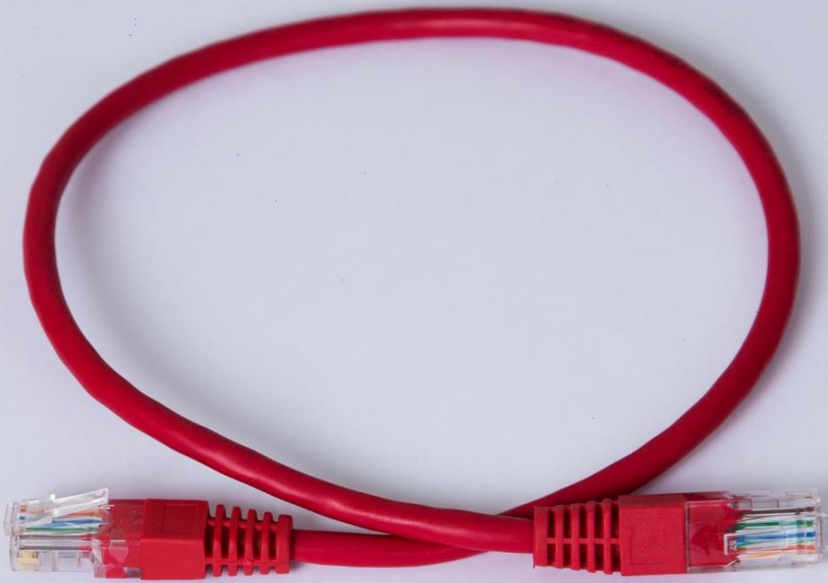
CAT 6 - UTP PATCH CORD



www.bmblink.com



CAT 6 Patch Cord



CAT 6 - UTP PATCH CORD

Table of Contents

- 1 [Description](#)
- 2 [Key Features](#)
- 3 [Specification](#)
- 4 [Performance](#)

High Quality Network Cable

info@bmblink.com

www://BMBLINK.COM

Bridging the Distance
Means
Bringing the World to You



Description

BMB's Category 6 patch cord and cross-over cables are factory manufactured using premium quality stranded conductor UTP cable and low crosstalk modular plugs and are fully tested to ensure consistent high performance.

The patch cords are suitable cabling wired in T568A or T568B configurations. Cross-over cables are suitable for direct hub to hub or PC to PC connections.

The Category 6 patch cord have been designed for high- speed voice & data applications and can be used together with Category 6 cable and accessories to construct a channel with Category 6/ Class E performance.

UL certified Category 6 channel performance when used when used together with BMB Category 6 cable, patch panel and jacks.

Bridging the Distance
Means
Bringing the World to You



Key Features

Available in 7 standard lengths from 0.5m -10m

Patch cords available in a choice of 9 cable colours with matching boots

Cross-over cables and boots are red for easy identification

8-position unscreened modular plug (RJ45) with 50 microinches of gold over nickel contacts

Suitable for Category 6 / Class E channels

Channel Compliant

Standards and ACA compliant

Bridging the Distance
Means
Bringing the World to You



High Quality Network Cable

info@bmblink.com

www://BMBLINK.COM



Specification

ELECTRICAL SPECIFICATIONS

- Plug insulation resistance: $\geq 500\text{M}\Omega$
- Plug contact resistance: $\leq 10\text{ m}\Omega$
- Plug DC resistance: $\leq 0.1\Omega$
- Plug current rating: $\geq 1.5\text{ A}$
- Plug dielectric withstanding voltage: $\geq 1\text{KV RMS}$

MECHANICAL SPECIFICATIONS

- Plug insertion durability: ≥ 750 mating cycles
- Cable to plug tensile strength: $\geq 89\text{ N}$

PHYSICAL SPECIFICATIONS

- Cable diameter: $5.4\text{ mm} \pm 0.2\text{mm}$
- Cable conductor: 24 AWG stranded bare copper wire
- Cable sheath: CM grade PVC
- Plug: Meets FCC part 68 and IEC 603-7
- Plug/ boot material: Plug flame retardant plastic, UL94V-O; boot PVC
- Plug contacts: Phosphor bronze with 50μ inches gold over nickel plating
- Operating temperature range: -10°C to 60°C

**Bridging the Distance
Means
Bringing the World to You**

High Quality Network Cable

info@bmblink.com

www://BMBLINK.COM



Performance

STANDARD

- AS/NZS 3080:2003
- AS/ACIF S008: 2001
- ISO/IEC11801: 2002
- ANSI/TIA/EIA-568-B.2

CERTIFICATION

UL Certified Category 6 channel performance when used together with BMB Category 6 cable, patch panel and jack.

ACA Compliant (N13181)



**Bridging the Distance
Means
Bringing the World to You**

High Quality Network Cable

info@bmblink.com

www://BMBLINK.COM